

# Montgomery® Safe-T-Tubes™

***Including New  
Standard and Thoracic Series***

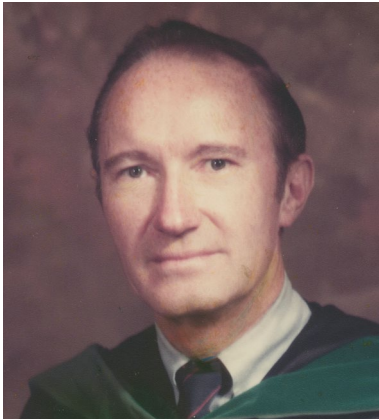
Series 4600 and 5600

Larger diameter of  
extraluminal limb

Increased  
airflow ✓

# Groundbreaking solutions. From physicians for physicians.

Though much has changed at Boston Medical Products over the past 45 years, one thing remains constant: our commitment to deliver the world's finest specialty surgical products — products that ENT physicians can rely on and patients can trust.



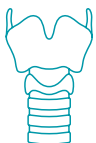
Boston Medical Products was founded in 1980 by three physicians - including world-renowned surgeon **William W. Montgomery, M.D.** as a way to make Dr. Montgomery's original innovations widely available to fellow physicians.

Today, Boston Medical Products continues to be driven by his life-long commitment to superior patient care.

William W. Montgomery, M.D. 1923–2003



Office, production and warehouse in Shrewsbury, Massachusetts



**Boston Medical Products is the only manufacturer in the world authorized to produce Montgomery® brand products.**

Simplicity, ease of use by physicians, and patient comfort have been the hallmarks of our innovations from the Montgomery® Safe-T-Tube, originally patented in 1973, to the Montgomery® Thyroplasty System.

The  
**original**  
**Montgomery®**  
brand



### Unmatched Physician and Patient Support

We support our customers through our highly trained Customer Service Team, who are ready to answer technical questions, assist with ordering, and ensure timely delivery.

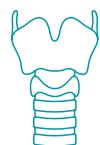


a bess group company

Since 2007 Boston Medical Products, Inc. has been part of bess group in Berlin, Germany – a family-owned and managed medical device company with more than 30 years of expertise in medical device technology.



**Convincing quality.**  
Worldwide connections.



Montgomery®

# Safe-T-Tube™

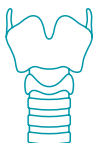
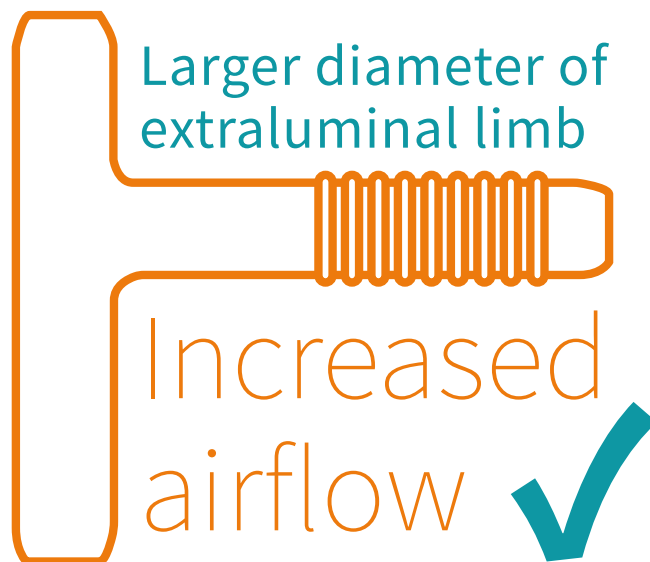
The Standard and Thoracic Safe-T-Tube™ models have undergone a redesign, reflecting ongoing efforts to incorporate user feedback and technological advancements into product development.

This ensures that the Montgomery Safe-T-Tubes™ remain at the forefront of airway management solutions.

## ● **NEW Standard and Thoracic Series**

The new 4600 Series Standard and 5600 Series Thoracic Safe-T-Tube™ feature a **slightly larger diameter of the extraluminal limb** which allows for **increased airflow**.

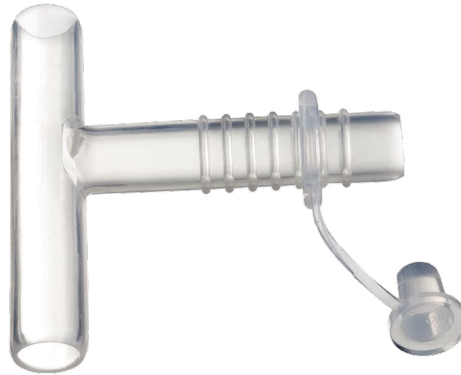
As part of this redesign, **two new sizes have been added** and the **lengths of the intraluminal limbs** were changed for some sizes.





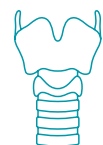
### Standard

The **4600 Series Standard Safe-T-Tube™** is the original design featuring enhanced dimensions that will work for the majority of surgical cases.



### Thoracic

The **5600 Series Thoracic Safe-T-Tube™** features an extra-long lower limb for thoracic applications.



Montgomery®

# Safe-T-Tube™

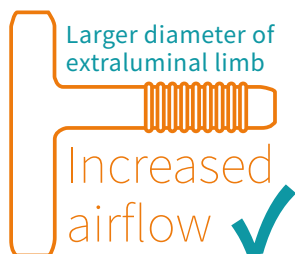
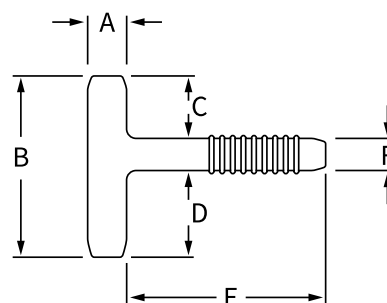
Ordering information

## Standard

**NEW 4600 Series Standard Safe-T-Tube™**

Size	REF		Dimensions (mm)							REF	
	Clear	Radiopaque	A	B	C	D	E	F		Plug/Ring Set	15 mm Adaptor
8	460008	460008R	8	36	12	16	55	8		361086	361087
9	460009	460009R	9	42	15	19	55	8		361086	361087
10	460010	460010R	10	51	18	23	55	10		361106	361107
11	460011	460011R	11	60	20	29	65	11		361116	361117
12	460012	460012R	12	66	23	32	65	11		361116	361117
13	460013	460013R	13	69	24	33	65	12		361126	361127
14	460014	460014R	14	72	25	35	65	12		361126	361127
15	460015	460015R	15	76	26	36	65	14		361146	361147
16	460016	460016R	16	78	27	37	65	14		361146	361147

Supplied sterile. Carton contains 1 Tube, 2 Plug/Ring Sets.  
Accessories purchased separately (361xxx) are supplied non-sterile.



The new 4600 Series Standard Safe-T-Tube™ features a **slightly larger diameter of the extraluminal limb** which allows for **increased airflow**.

The new 4600 Series Standard Safe-T-Tube™ comes with two larger Plug/Ring Sets (REF 361XX6).

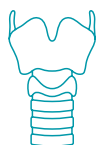
**When ordering accessories separately, please note that only REF 361XXX will fit.**



Plug/Ring Set REF 361XX6



15 mm Adaptor REF 361XX7





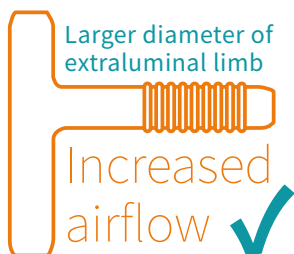
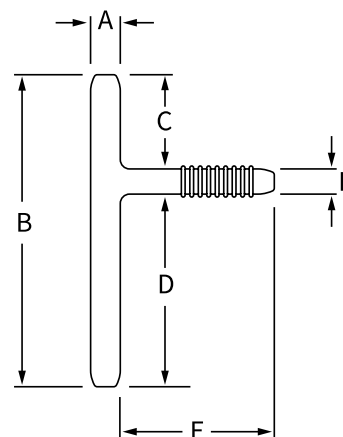


## Thoracic

### NEW 5600 Series Thoracic Safe-T-Tube™

Size	REF		Dimensions (mm)						REF	
	Clear	Radiopaque	A	B	C	D	E	F	Plug/Ring Set	15 mm Adaptor
8	560008	560008R	8	83	15	60	55	8	361086	361087
9	560009	560008R	9	90	17	65	55	8	361086	361087
10	560010	560010R	10	99	19	70	55	10	361106	361107
11	560011	560011R	11	101	20	70	65	11	361116	361117
12	560012	560012R	12	108	22	75	65	11	361116	361117
13	560013	560013R	13	111	24	75	65	12	361126	361127
14	560014	560014R	14	118	26	80	65	12	361126	361127
15	560015	560015R	15	122	28	80	65	14	361146	361147
16	560016	560016R	16	129	30	85	65	14	361146	361147

Supplied sterile. Carton contains 1 Tube, 2 Plug/Ring Sets.  
Accessories purchased separately (361xxx) are supplied non-sterile.



The new 5600 Series Thoracic Safe-T-Tube™ features a **slightly larger diameter of the extraluminal limb** which allows for **increased airflow**.

The new 5600 Series Thoracic Safe-T-Tube™ comes with two larger Plug/Ring Sets (REF 361XX6).

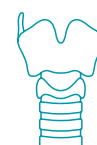
**When ordering accessories separately, please note that only REF 361XXX will fit.**



Plug/Ring Set REF 361XX6



15 mm Adaptor REF 361XX7



Montgomery®

# Safe-T-Tube™

## Extra-Long

The **6200 Series Extra-Long Safe-T-Tube™** is designed to provide the surgeon the total freedom to customize the intraluminal limbs to any desired length.



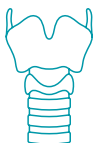
## Pediatric

The **3200 Series Pediatric Safe-T-Tubes™** feature an angled extraluminal limb to facilitate suctioning and airway management.



## Tapered

The **7200 Series Tapered Safe-T-Tube™** is designed to assist with the management of tracheal and subglottic stenoses. The superior end conforms to the contour of the glottis and subglottis, while the larger inferior portion simultaneously acts as a stent for the trachea.



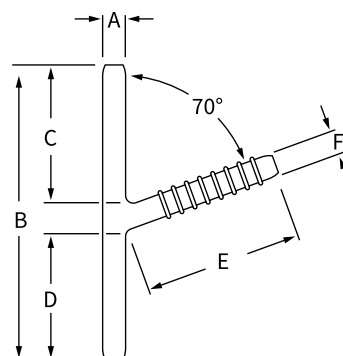


## Pediatric

### 3200 Series Pediatric Safe-T-Tubes™

Size	REF		Dimensions (mm)						REF
	Clear	Radiopaque	A	B	C	D	E	F	
6	320006	32006R	6	94	46	42	45	6	321066
7	320007	32007R	7	95	46	43	45	6	321066
8	320008	32008R	8	96	46	42	45	8	321086
9	320009	32009R	9	97	46	43	45	8	321086

Supplied sterile. Carton contains 1 Tube, 2 Plug/Ring Sets.  
Accessories purchased separately (321xxx) are supplied non-sterile.

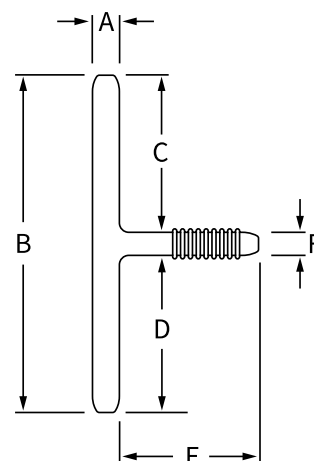


## Extra-Long

### 6200 Series Extra-Long Safe-T-Tube™

Size	REF		Dimensions (mm)						REF	
	Clear	Radiopaque	A	B	C	D	E	F	Plug/Ring Set	15 mm Adaptor
10	620010	62010R	10	156	74	74	37	8	321106	321107
11	620011	62011R	11	159	74	74	49	11	321126	321127
12	620012	62012R	12	159	74	74	48	11	321126	321127
13	620013	62013R	13	159	74	74	57	11	321126	321127
14	620014	62014R	14	159	74	74	57	11	321126	321127
15	620015	62015R	15	159	74	74	57	11	321126	321127
16	620016	62016R	16	159	74	74	64	11	321126	321127

Supplied sterile. Carton contains 1 Tube, 2 Plug/Ring Sets.  
Accessories purchased separately (321xxx) are supplied non-sterile.

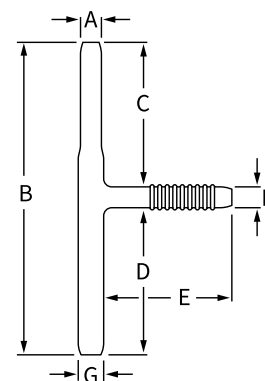


## Tapered

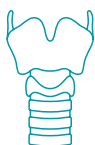
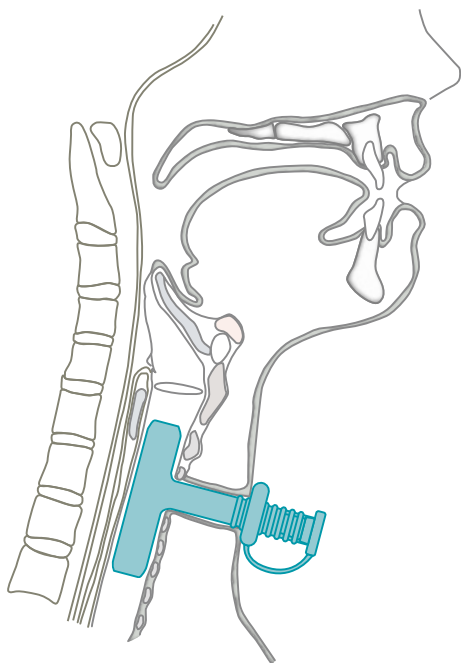
### 7200 Series Tapered Safe-T-Tube™

Size	REF		Dimensions (mm)						REF	
	Clear	Radiopaque	A	B	C	D	E	F	Plug/Ring Set	15 mm Adaptor
8/10	721008	71008R	8	158	75	75	67	8	10	321106
10/13	721310	71310R	10	159	74	74	65	11	13	321126

Supplied sterile. Carton contains 1 Tube, 2 Plug/Ring Sets.  
Accessories purchased separately (321xxx) are supplied non-sterile.



# The Montgomery® Safe-T-Tube™





## Intended Purpose

To maintain an adequate tracheal airway, as well as to provide support in the stenotic trachea that has been reconstituted or reconstructed.

## Indications

- Acute tracheal injuries
- Support reconstituted airway
- Support reconstructed airway
- Segmental resection and anastomosis
- Tracheal stenosis when the cervical airway cannot be repaired
- Substitute for the cervical trachea when it cannot be reconstructed

## Five styles available

**Pediatric** Safe-T-Tube™ (3200 Series)

**Standard** Safe-T-Tube™ (new 4600 Series)

**Thoracic** Safe-T-Tube™ (new 5600 Series)

**Extra-Long** Safe-T-Tube™ (6200 Series)

**Tapered** Safe-T-Tube™ (7200 Series)



Montgomery®

# Safe-T-Tube™



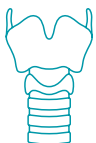
Available in clear or  
radiopaque material

Special situations require  
shortened Safe-T-Tube™ limbs.

We offer a service to shorten  
any Safe-T-Tube™ to your  
exact dimensions and  
finish the ends  
with a smooth taper.

Please contact Customer Service  
+1 (508) 898-9300  
[info@bosmed.com](mailto:info@bosmed.com)

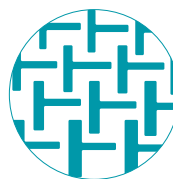
Implant-grade silicone,  
non-adherent smooth  
surface



# Original Features



Safe-T-Tubes™ are easy to insert, suction and remove, and can be used with anesthesia.



Safe-T-Tubes™ come in a large variety of sizes.

## Ridges and grooves

along the extraluminal limb of the tube allow a ring washer to be attached, significantly reducing the possibility of accidental posterior displacement.



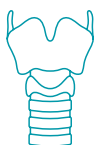
## Each Safe-T-Tube™ is supplied sterile.

Carton contains 1 Tube,  
2 Plug/Ring Sets, 1 Patient-PAK™.

## 2 Plug/Ring Sets are included with each Safe-T-Tube.

Extra Plug/Ring Sets are available separately.





## To Place an Order

Our Customer Service Representatives are available from 8:30 a.m. to 5:00 p.m. (EST) Monday through Friday. Orders can also be placed through our 24-hour fax line or by e-mail.

- Customer Service: 800-433-2674 (toll-free in the U.S.)
- Main Telephone: 508-898-9300
- 24-hour-Fax: 508-898-2373
- customerservice@bosmed.com

## Prescription Policy

U.S. federal law restricts these products to sale by or on the order of a physician.

## Shipment

Standard shipping within the U.S. is FedEx Ground delivery. Express orders are accepted until 4:00 p.m. (EST) for next business day delivery nationwide.

## Return Policy

All sales final, no returns or exchanges will be accepted.

## Warranty

Boston Medical Products, Inc. warrants that reasonable care has been used in the manufacturing of all products. All products are warranted to be free of defects at the time of shipment. For specific product warranties, please refer to individual product Instructions for Use.



Boston Medical Products, Inc. — Shrewsbury, MA, USA



Please note that only the current instructions for use apply. Details in this catalog about the use of products serve as a guide only and reflect the information available at the time of print. If necessary, please request a current version!



The instructions for use for some of our products are available only in electronic form (in pdf format) on our website.

Please see the product label for the required access information.

**Please note that product availability may vary by country.  
Please contact us for details.**





**Montgomery®  
Safe-T-Tubes™**

The original  
Montgomery® brand product.



a bess group company

**Boston Medical Products, Inc.**

70 Chestnut Street

Shrewsbury, MA 01545 USA

Tel.: +1 (508) 898-9300

Fax: +1 (508) 898-2373

[www.bosmed.com](http://www.bosmed.com) • [info@bosmed.com](mailto:info@bosmed.com)